

Silverstone CE Primary

Curriculum Statement

Our Vision:

Where we Learn Together, Grow Together, Achieve Together, knowing that Jesus said:

"I am the vine; you are the branches. If you remain in me and I in you, you will bear much fruit." John 15:5

At Silverstone CE Primary we aim to nurture the talents and aspirations of our school community, developing the qualities of self-confidence, responsibility, compassion and determination to enable everyone to be the best they can be and to flourish in an ever-changing world.

We have eight core Christian Values which are our main drivers to achieve our vision. Our values help guide us all in how we behave and how we approach challenges and opportunities

1. Hope
2. Trust
3. Love
4. Respect
5. Forgiveness
6. Resilience
7. Compassion
8. Curiosity

Trust Vision:

For every child, within our Trust, to experience an excellent education and to realise their God-given potential to flourish.

Our Pathway:

Working together as one, through the affirmation of God's love within a distinctively Christian ethos, we aim to:

Educate for:

- Wisdom and Knowledge
- Hope and Aspiration
- Community and Living Well Together
- Dignity and Respect

We also aim to promote a positive, open and honest culture which embraces and nurtures these.

We ensure our school is inclusive, serving the local community and welcoming all: children of the Christian faith, of other faiths or of no faith.

Inclusivity:

We ensure our curriculum is accessible to all.

Curriculum Intent:

In our school the curriculum is broadly defined as the knowledge students are expected to learn (including spiritual, moral, social and cultural) through the totality of experiences provided in our children's primary schooling. By knowledge we mean facts, concepts and rules (declarative knowledge: to know that...), and procedural knowledge (to know how....) acquired through experience and /or education.

The curriculum lies at the heart of education in Silverstone CE Primary. It therefore determines what our learners will become, what they will know and understand, and what they will be able to do by the time they leave.

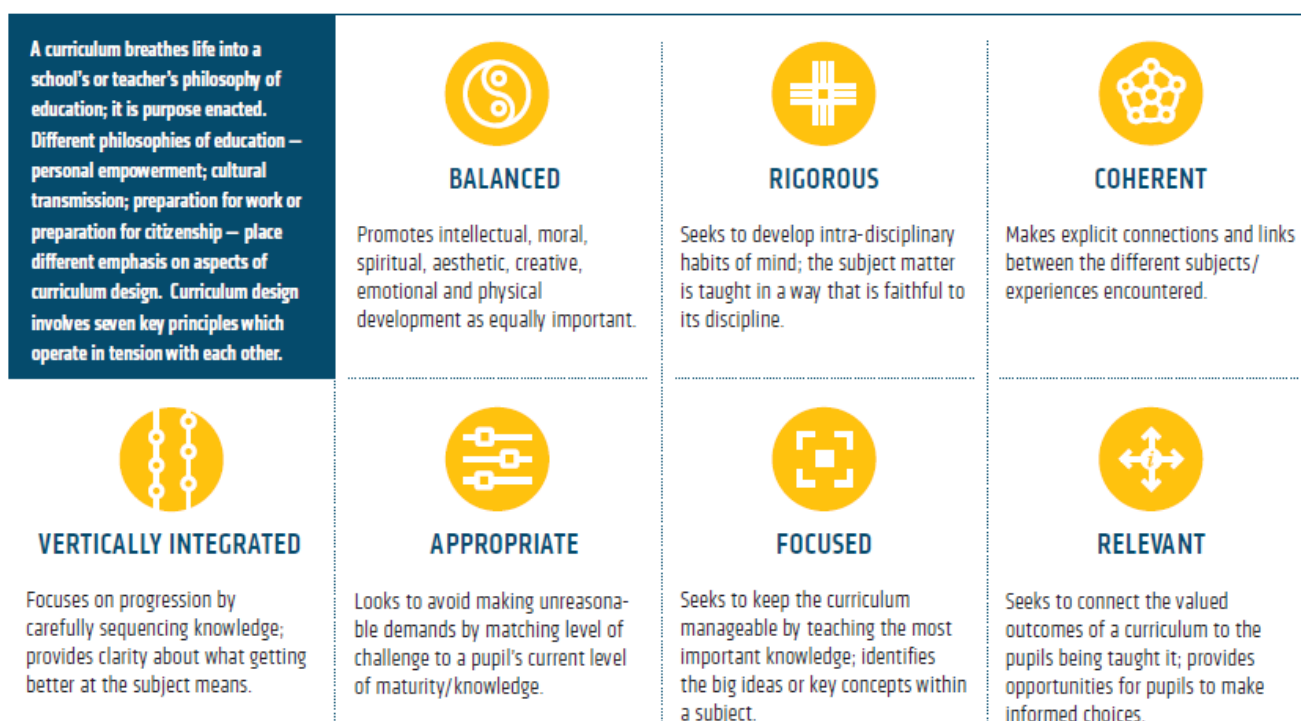
Bearing in mind the definition of knowledge above, we aim for our knowledge-rich curriculum to enable:

- (i) Sustained mastery (and a greater understanding for those who are capable) of subject specific key knowledge that we want the children to acquire;
- (ii) Sustained mastery of knowledge that pupils will need to be able to make sense of the world by providing rich cultural capital.

We deliver the National Curriculum 2014 throughout Key Stage 1 and 2 providing pupils with ‘an introduction to the essential knowledge that they need to be educated citizens and to the best that has been thought and said, helping to engender an appreciation of human creativity and achievement’.

We regard the curriculum as the progression model. We focus on knowledge progression mainly through subject specific models within the context of themes or topics. Hence, our aim is for our curriculum to be coherently planned, organised and structured with key concepts identified and prioritised, built upon and revisited.

Key principles of our curriculum design are illustrated below:



William D. (2013) Principled Curriculum Design (Designed by Oliver Caviglioli)

Whilst we ensure that there is a broad and rich curriculum, we prioritise and regard the mastering of foundational knowledge as crucial in the younger years. Reading and vocabulary development is an integral part of our curriculum. We aim to develop Tier 1, 2 and 3 vocabulary (Isabel Beck 2002). Pupils from all backgrounds, including those who are disadvantaged, are provided with the tools to access a broad curriculum within a language rich environment.

We also aim for our curriculum to develop attitudes, attributes and dispositions which enable our children to:

- (i) develop as confident, responsible citizens;

- (ii) be prepared for future learning e.g. resilience, perseverance and a growth mind-set.

Our curriculum reflects our local needs and context. The curriculum meets the particular aims and values of our school by providing opportunities and experiences for our pupils to develop:

Citizenship – *giving back, serving, fairness, respect for our local and global environment. A significant proportion of our pupils are from relatively affluent families and have minimum experiences of 'going without' or do not truly appreciate the 'value of items' when using resources for learning and play. Many have a real sense of their own rights but need to develop their sense of responsibility and respect towards others and our environment.*

Understanding and appreciation of cultural diversity – *Silverstone is a village in rural Northamptonshire and the vast majority of our pupil role is White British. Almost all pupils transition to a local secondary school of similar demographics.*

Self-regulation and resilience – *Learning behaviours for the vast majority of our pupils are very good although a significant number of pupils lack real resilience towards challenges which can impede on outstanding progress.*

Whilst learning behaviours are good during structured lesson time our pupils need to develop self-regulation, self-monitoring, tolerance and respect towards others to ensure that outstanding behaviours are demonstrated by every child during unstructured times of the day.

Curriculum Implementation:

'Learning is defined as an alteration in long-term memory. If nothing has been altered in long-term memory then nothing has been learned.'

Sweller et al. 2011

In line with cognitive load theory we aim, through our teaching, to develop understanding by building well-developed schema: well organised, connected knowledge as opposed to a handful of unconnected facts. We, therefore, favour spaced and distributed learning, where knowledge is rehearsed for short periods over a longer period of time. We aim to ensure retrieval practice is built in to strengthen memory by:

- Providing overviews

- Outlining content to be covered and signalling transitions between different parts of the lesson;
- Calling attention to main ideas;
- Providing daily, weekly and monthly reviews.
- Re-teaching when necessary.

We regard teaching as effective when underpinned by Rosenshine's 'Principles of Instruction' (see the Trust's Teaching and Learning statement). Effective questioning, effective use of formative assessment and adaptive, responsive teaching are regarded as key.

Responsive teaching will be delivered and appropriate reasonable adjustments put in place to enable all children to access the curriculum.

We regard the following teachers' knowledge as essential:

- pedagogical knowledge: teachers' knowledge of effective teaching methods;
- content knowledge: teachers' subject knowledge;
- pedagogical content knowledge: teachers' knowledge of how to teach the particular subject / topic e.g. knowing the misconceptions that arise prior to teaching specific key knowledge.

Leadership of the curriculum is distributed within our academies. Subject leaders are given the autonomy to lead on their specific subject curriculum within the shared vision and accountability framework of the school.

Curriculum Impact:

We measure this by the extent to which our aims, curriculum defined end points and strong outcomes are achieved as a result of our curriculum intent and implementation.

The vast majority of our pupils will have sustained mastery of key, detailed knowledge identified and some children will have a greater depth of understanding.

'If a student has learnt the curriculum, they have made progress.'

Michael Fordham

Curriculum Leadership:

Leadership of the curriculum is distributed. Subject leaders are given the autonomy to lead on their specific subject curriculum within the shared vision and accountability framework of the school.